

# Test Report

Report No.: AGC00552200704-001

Date: Jul.24, 2020

Page 1 of 14

Applicant: Shenzhen Huafurui Technology Co., Ltd.  
Address: Unit 1401 & 1402, 14/F, Jinqi zhigu mansion (No. 4 building of Chongwen Garden), Crossing of the Liuxian street and Tangling road, Taoyuan street, Nanshan district, Shenzhen, P.R. China  
Test site: 6/F., Building 2, Sanwei Chaxi Industrial Park, Sanwei Community, Hangcheng Street, Bao'an District, Shenzhen, Guangdong, China

## Report on the submitted sample(s) said to be:

Sample Name: Smart Phone  
Model: NOTE 20 PRO  
Brand: CUBOT  
Manufacturer: Shenzhen Huafurui Technology Co., Ltd.  
Address: Unit 1401 & 1402, 14/F, Jinqi zhigu mansion (No. 4 building of Chongwen Garden), Crossing of the Liuxian street and Tangling road, Taoyuan street, Nanshan district, Shenzhen, P.R. China  
Sample Received Date: Jul.15, 2020  
Testing Period: Jul.15, 2020 to Jul.24, 2020

## Test Requested:

As specified by client, to determine the Pb, Cd, Hg, Cr<sup>6+</sup>, PBBs, PBDEs, DBP, BBP, DEHP, DIBP content in the submitted sample in accordance with Directive 2011/65/EU (RoHS) and its amendment directive (EU) 2015/863 on XRF and Chemical Method.

## Conclusion

Pass

Approved by:

Liangdan, Jessie.Liang

Technical Director



The results shown in this test report refer only to the sample(s) tested unless otherwise stated and the sample(s) are retained for 30 days only. The document is issued by AGC, this document cannot be reproduced except in full with our prior written permission. The more details and the authenticity of the report will be confirmed at <http://www.agc-cert.com>.

# Test Report

Report No.: AGC00552200704-001

Date: Jul.24, 2020

Page 2 of 14

No.	Sample Description		
1.	Display screen	Touch screen	
2.		Metal shell	
3.		FPC	
4.	Outer shell	Black plastic frame	
5.		Copper nut	
6.		Metal clapboard	
7.		White sticker	
8.		Black plastic shell	
9.		Gray black plastic frame	
10.		Gray black Metal circle	
11.		Camera lens	
12.		Back cover	Black plastic back cover
13.		Black screw	
14.		Speaker	Magnetic shielding cover
15.	Black plastic frame		
16.	Metal frame		
17.	Receiver	Magnetic shielding	
18.		Black plastic frame	
19.		Metal frame	
20.	Motor	Metal shell	
21.		Red wire jacket	
22.		Blue wire jacket	
23.	Camera	Black rubber ring	
24.		Camera lens	
25.		Black plastic seat	
26.		Metal shell	
27.	Type-C connector plate	TYPE-C connector	TYPE-C metal connector
28.			Grey plastic joint
29.		Chip microphone	
30.		Grey plastic terminal block	
31.		PCB board	
32.	Tin solder		
33.	Circuit board	Black plastic audio connector	
34.		Terminal block	White plastic seat
35.			Grey plastic buckle
36.		Battery holder	Metal shell
37.			White plastic seat
38.			Copper stylus
39.		Cassette	Metal shell
40.			White plastic seat

The results shown in this test report refer only to the sample(s) tested unless otherwise stated and the sample(s) are retained for 30 days only. The document is issued by AGC, this document cannot be reproduced except in full with our prior written permission. The more details and the authenticity of the report will be confirmed at <http://www.agc-cert.com>.



# Test Report

Report No.: AGC00552200704-001

Date: Jul.24, 2020

Page 3 of 14

41.		Chip IC	
42.		LED lamp	Black rubber sleeve
43.		Chip IC	
44.		PCB board	
45.		Tin solder	
46.	Black rubber sleeve		
47.	Shielding case		
48.	Antenna		Black wire jacket
49.			Black Label
50.	Battery		Black plastic shell
51.			PCB board
Adapter			
52.			Black With lettering Plastic shell
53.	Outer shell		Metal plug
54.			White plastic plug
55.		Metal contact piece	
56.		Color ring resistance	Black sleeving
57.		Electrolytic capacitor	Black sleeving
58.			Green sleeving
59.	Circuit board	Transformer	Blue tape
60.			Black plastic skeleton
61.		USB joint	USB metal joint
62.			White plastic contact
63.		PCB board	
64.		Tin solder	
USB line			
65.			USB metal plug
66.	USB plug		White plastic plug
67.			White handle
68.			Tin solder
69.			Type-c metal plug
70.	Type-C plug		White plastic plug
71.			Grey plastic plug
72.			Tin solder
73.			PCB board
74.	Wire rod		White outer wire jacket
75.			Red wire jacket
76.			Black wire jacket
77.			White wire jacket
78.			Green wire jacket

The results shown in this test report refer only to the sample(s) tested unless otherwise stated and the sample(s) are retained for 30 days only. The document is issued by AGC, this document cannot be reproduced except in full with our prior written permission. The more details and the authenticity of the report will be confirmed at <http://www.agc-cert.com>.



# Test Report

Report No.: AGC00552200704-001

Date: Jul.24, 2020

Page 4 of 14

**Test Result:**

(Test Method/ Instrument/ MDL and Limit: See Appendix)

No.	Test result (mg/kg)										Conclusion
	Pb	Cd	Hg	Cr <sup>6+</sup>	PBBs	PBDEs	DIBP	DBP	BBP	DEHP	
1	N.D.	N.D.	N.D.	N.D.	N.D.	N.D.	N.D.*	N.D.*	N.D.*	N.D.*	Conformity
2	N.D.	N.D.	N.D.	N.D.*	N/A	N/A	N/A	N/A	N/A	N/A	Conformity
3	N.D.	N.D.	N.D.	N.D.	N.D.	N.D.	N.D.*	N.D.*	N.D.*	N.D.*	Conformity
4	N.D.	N.D.	N.D.	316	N.D.	N.D.	N.D.*	N.D.*	N.D.*	N.D.*	Conformity
5	35448*	N.D.	N.D.	N.D.	N/A	N/A	N/A	N/A	N/A	N/A	Conformity
6	225*	N.D.	N.D.	N.D.	N/A	N/A	N/A	N/A	N/A	N/A	Conformity
7	N.D.	N.D.	N.D.	N.D.	N.D.	N.D.	N.D.*	N.D.*	N.D.*	N.D.*	Conformity
8	N.D.	N.D.	N.D.	N.D.	N.D.	N.D.	N.D.*	N.D.*	N.D.*	N.D.*	Conformity
9	N.D.	N.D.	N.D.	N.D.	N.D.	N.D.	N.D.*	N.D.*	N.D.*	N.D.*	Conformity
10	N.D.	N.D.	N.D.	N.D.	N/A	N/A	N/A	N/A	N/A	N/A	Conformity
11	N.D.	N.D.	N.D.	N.D.	N.D.	N.D.	N.D.*	N.D.*	N.D.*	N.D.*	Conformity
12	N.D.	N.D.	N.D.	N.D.	N.D.	N.D.	N.D.*	N.D.*	N.D.*	N.D.*	Conformity
13	N.D.	N.D.	N.D.	N.D.	N/A	N/A	N/A	N/A	N/A	N/A	Conformity
14	N.D.	N.D.	N.D.	N.D.	N/A	N/A	N/A	N/A	N/A	N/A	Conformity
15	N.D.	N.D.	N.D.	587	N.D.	N.D.	N.D.*	N.D.*	N.D.*	N.D.*	Conformity
16	N.D.	N.D.	N.D.	N.D.	N/A	N/A	N/A	N/A	N/A	N/A	Conformity
17	N.D.	N.D.	N.D.	N.D.	N/A	N/A	N/A	N/A	N/A	N/A	Conformity
18	N.D.	N.D.	N.D.	486	N.D.	N.D.	N.D.*	N.D.*	N.D.*	N.D.*	Conformity
19	220	N.D.	N.D.	285	N/A	N/A	N/A	N/A	N/A	N/A	Conformity
20	N.D.	N.D.	N.D.	567	N/A	N/A	N/A	N/A	N/A	N/A	Conformity
21	N.D.	N.D.	N.D.	655	N.D.	N.D.	N.D.*	N.D.*	N.D.*	N.D.*	Conformity
22	N.D.	N.D.	N.D.	N.D.*	N.D.	N.D.	N.D.*	N.D.*	N.D.*	N.D.*	Conformity
23	N.D.	N.D.	N.D.	N.D.	N.D.	N.D.	N.D.*	N.D.*	N.D.*	N.D.*	Conformity
24	N.D.	N.D.	N.D.	N.D.	N.D.	N.D.	N.D.*	N.D.*	N.D.*	N.D.*	Conformity
25	N.D.	N.D.	N.D.	N.D.	N.D.	N.D.	N.D.*	N.D.*	N.D.*	N.D.*	Conformity
26	N.D.	N.D.	N.D.	N.D.*	N/A	N/A	N/A	N/A	N/A	N/A	Conformity
27	N.D.	N.D.	N.D.	N.D.*	N/A	N/A	N/A	N/A	N/A	N/A	Conformity
28	N.D.	N.D.	N.D.	N.D.*	N.D.	N.D.	N.D.*	N.D.*	N.D.*	N.D.*	Conformity
29	N.D.	N.D.	N.D.	N.D.	N.D.	N.D.	N.D.*	N.D.*	N.D.*	N.D.*	Conformity
30	N.D.	N.D.	N.D.	461	N.D.	N.D.	N.D.*	N.D.*	N.D.*	N.D.*	Conformity
31	N.D.	N.D.	N.D.	N.D.	N.D.*	N.D.*	N.D.*	N.D.*	N.D.*	N.D.*	Conformity
32	N.D.	N.D.	N.D.	N.D.	N/A	N/A	N/A	N/A	N/A	N/A	Conformity
33	N.D.	N.D.	N.D.	628	N.D.	N.D.	N.D.*	N.D.*	N.D.*	N.D.*	Conformity
34	N.D.	N.D.	N.D.	N.D.	N.D.	N.D.	N.D.*	N.D.*	N.D.*	N.D.*	Conformity
35	N.D.	N.D.	N.D.	628	N.D.	N.D.	N.D.*	N.D.*	N.D.*	N.D.*	Conformity
36	N.D.	N.D.	N.D.	N.D.*	N/A	N/A	N/A	N/A	N/A	N/A	Conformity

The results shown in this test report refer only to the sample(s) tested unless otherwise stated and the sample(s) are retained for 30 days only. The document is issued by AGC, this document cannot be reproduced except in full with our prior written permission. The more details and the authenticity of the report will be confirmed at <http://www.agc-cert.com>.



# Test Report

Report No.: AGC00552200704-001

Date: Jul.24, 2020

Page 5 of 14

No.	Test result (mg/kg)										Conclusion
	Pb	Cd	Hg	Cr <sup>6+</sup>	PBBs	PBDEs	DIBP	DBP	BBP	DEHP	
37	N.D.	N.D.	N.D.	N.D.	N.D.	N.D.	N.D.*	N.D.*	N.D.*	N.D.*	Conformity
38	N.D.	N.D.	N.D.	N.D.	N/A	N/A	N/A	N/A	N/A	N/A	Conformity
39	N.D.	N.D.	N.D.	N.D.	N/A	N/A	N/A	N/A	N/A	N/A	Conformity
40	N.D.	N.D.	N.D.	N.D.	N.D.	N.D.	N.D.*	N.D.*	N.D.*	N.D.*	Conformity
41	N.D.	N.D.	N.D.	N.D.	N.D.	N.D.	N.D.*	N.D.*	N.D.*	N.D.*	Conformity
42	N.D.	N.D.	N.D.	N.D.	N.D.	N.D.	N.D.*	N.D.*	N.D.*	N.D.*	Conformity
43	N.D.	N.D.	N.D.	N.D.	N.D.	N.D.	N.D.*	N.D.*	N.D.*	N.D.*	Conformity
44	N.D.	N.D.	N.D.	N.D.	N.D.*	N.D.*	N.D.*	N.D.*	N.D.*	N.D.*	Conformity
45	N.D.	N.D.	N.D.	N.D.	N/A	N/A	N/A	N/A	N/A	N/A	Conformity
46	N.D.	N.D.	N.D.	N.D.	N.D.	N.D.	N.D.*	N.D.*	N.D.*	N.D.*	Conformity
47	N.D.	N.D.	N.D.	N.D.	N/A	N/A	N/A	N/A	N/A	N/A	Conformity
48	N.D.	N.D.	N.D.	N.D.	N.D.	N.D.	N.D.*	N.D.*	N.D.*	N.D.*	Conformity
49	N.D.	N.D.	N.D.	N.D.	N.D.	N.D.	N.D.*	N.D.*	N.D.*	N.D.*	Conformity
50	N.D.	N.D.	N.D.	470	N.D.	N.D.	N.D.*	N.D.*	N.D.*	N.D.*	Conformity
51	N.D.	N.D.	N.D.	N.D.	N.D.*	N.D.*	N.D.*	N.D.*	N.D.*	N.D.*	Conformity
52	N.D.	N.D.	N.D.	371	N.D.	N.D.	N.D.*	N.D.*	N.D.*	N.D.*	Conformity
53	262	N.D.	N.D.	N.D.	N/A	N/A	N/A	N/A	N/A	N/A	Conformity
54	N.D.	N.D.	N.D.	N.D.	N.D.	N.D.	N.D.*	N.D.*	N.D.*	N.D.*	Conformity
55	N.D.	N.D.	N.D.	267	N/A	N/A	N/A	N/A	N/A	N/A	Conformity
56	N.D.	N.D.	N.D.	374	N.D.	N.D.	N.D.*	N.D.*	N.D.*	N.D.*	Conformity
57	N.D.	N.D.	N.D.	N.D.	N.D.	N.D.	N.D.*	N.D.*	N.D.*	N.D.*	Conformity
58	N.D.	N.D.	N.D.	427	N.D.	N.D.	N.D.*	N.D.*	N.D.*	N.D.*	Conformity
59	N.D.	N.D.	N.D.	464	N.D.	N.D.	N.D.*	N.D.*	N.D.*	N.D.*	Conformity
60	N.D.	N.D.	N.D.	N.D.	N.D.	N.D.	N.D.*	N.D.*	N.D.*	N.D.*	Conformity
61	N.D.	N.D.	N.D.	N.D.	N/A	N/A	N/A	N/A	N/A	N/A	Conformity
62	N.D.	N.D.	N.D.	N.D.	N.D.*	N.D.*	N.D.*	N.D.*	N.D.*	N.D.*	Conformity
63	N.D.	N.D.	N.D.	308	N.D.*	N.D.*	N.D.*	N.D.*	N.D.*	N.D.*	Conformity
64	N.D.	N.D.	N.D.	N.D.	N/A	N/A	N/A	N/A	N/A	N/A	Conformity
65	N.D.	N.D.	N.D.	N.D.	N/A	N/A	N/A	N/A	N/A	N/A	Conformity
66	N.D.	N.D.	N.D.	N.D.	N.D.*	N.D.*	N.D.*	N.D.*	N.D.*	N.D.*	Conformity
67	N.D.	N.D.	N.D.	N.D.	N.D.	N.D.	N.D.*	N.D.*	N.D.*	N.D.*	Conformity
68	N.D.	N.D.	N.D.	693	N/A	N/A	N/A	N/A	N/A	N/A	Conformity
69	N.D.	N.D.	N.D.	N.D.*	N/A	N/A	N/A	N/A	N/A	N/A	Conformity
70	N.D.	N.D.	N.D.	431	N.D.*	N.D.*	N.D.*	N.D.*	N.D.*	N.D.*	Conformity
71	N.D.	N.D.	N.D.	N.D.*	N.D.	N.D.	N.D.*	N.D.*	N.D.*	N.D.*	Conformity
72	N.D.	N.D.	N.D.	N.D.	N/A	N/A	N/A	N/A	N/A	N/A	Conformity
73	N.D.	N.D.	N.D.	N.D.	N.D.	N.D.	N.D.*	N.D.*	N.D.*	N.D.*	Conformity
74	N.D.	N.D.	N.D.	466	N.D.	N.D.	N.D.*	N.D.*	N.D.*	N.D.*	Conformity

The results shown in this test report refer only to the sample(s) tested unless otherwise stated and the sample(s) are retained for 30 days only. The document is issued by AGC, this document cannot be reproduced except in full with our prior written permission. The more details and the authenticity of the report will be confirmed at <http://www.agc-cert.com>.



# Test Report

Report No.: AGC00552200704-001

Date: Jul.24, 2020

Page 6 of 14

No.	Test result (mg/kg)										Conclusion
	Pb	Cd	Hg	Cr <sup>6+</sup>	PBBs	PBDEs	DIBP	DBP	BBP	DEHP	
75	N.D.	N.D.	N.D.	N.D.*	N.D.	N.D.	N.D.*	N.D.*	N.D.*	N.D.*	Conformity
76	205	N.D.	N.D.	N.D.	N.D.	N.D.	N.D.*	N.D.*	N.D.*	N.D.*	Conformity
77	N.D.	N.D.	N.D.	N.D.*	N.D.	N.D.	N.D.*	N.D.*	N.D.*	N.D.*	Conformity
78	N.D.	N.D.	N.D.	407	N.D.	N.D.	N.D.*	N.D.*	N.D.*	N.D.*	Conformity

**Note:**

mg/kg = milligram per kilogram

µg/cm<sup>2</sup> = microgram per square centimeter

N.D.=Not Detected (less than method detection limit)

N/A= Not applicable

MDL = Method Detection Limit

**Exemption**

No.	Exemption clause	Content
5 6	6(c)	Copper alloy containing up to 4 % lead by weight

The results shown in this test report refer only to the sample(s) tested unless otherwise stated and the sample(s) are retained for 30 days only. The document is issued by AGC, this document cannot be reproduced except in full with our prior written permission. The more details and the authenticity of the report will be confirmed at <http://www.agc-cert.com>.



# Test Report

Report No.: AGC00552200704-001

Date: Jul.24, 2020

Page 7 of 14

**Remark:**

- \*denotes as reported result(s) was (were) performed by wet chemistry method. Others were screened by XRF. For XRF screening, the result(s) of Cr VI was (were) reported as total chromium and the result(s) of PBBs and PBDEs was (were) reported as total bromine. Also, the XRF result(s) may be different to the actual content based on various factors including, but not limit to, sample size, thickness, area, nonuniformity composition, surface flatness.
- This XRF Scanning report is for reference purposes only. The applicant shall make its/his/her own judgment as to whether the information provided in this XRF screening report is sufficient for its/his/her purposes.

The result shown in this XRF scanning report will differ based on various factors, including but not limited to, the sample size, thickness, area, surface flatness, equipment parameters and matrix effect (e.g. plastic, rubber, metal, glass, ceramic etc.). Further wet chemical pre-treatment with relevant chemical equipment analysis are required to obtain quantitative data.

- Boiling-water-extraction:

Number	Colorimetric result (Cr(VI) concentration)	Qualitative result
1	The sample solution is < the 0,10 µg/cm <sup>2</sup> equivalent comparison standard solution	The sample is negative for Cr(VI) – The Cr(VI) concentration is below the limit of quantification. The coating is considered a non-Cr(VI) based coating.
2	The sample solution is ≥ the 0,10 µg/cm <sup>2</sup> and ≤ the 0,13 µg/cm <sup>2</sup> equivalent comparison standard solutions	The result is considered to be inconclusive – Unavoidable coating variations may influence the determination.
3	The sample solution is > the 0,13 µg/cm <sup>2</sup> equivalent comparison standard solution	The sample is positive for Cr(VI) – The Cr(VI) concentration is above the limit of quantification and the statistical margin of error. The sample coating is considered to contain Cr(VI).

- Negative indicates the absence of Cr(VI) on the tested areas concentration is below the limit of quantification. The coating is considered a non-Cr(VI) based coating.  
Uncertainty indicates the absence of Cr(VI) on the tested areas unavoidable coating variations may influence the determination.  
Positive indicates the presence of Cr(VI) on the tested areas concentration is above the limit of quantification and the statistical margin of error. The sample coating is considered to contain Cr(VI).  
Storage conditions and production date of the tested sample are unavailable and thus result of Cr(VI) represent status of the sample at the time of testing.

The results shown in this test report refer only to the sample(s) tested unless otherwise stated and the sample(s) are retained for 30 days only. The document is issued by AGC, this document cannot be reproduced except in full with our prior written permission. The more details and the authenticity of the report will be confirmed at <http://www.agc-cert.com>.



# Test Report

Report No.: AGC00552200704-001

Date: Jul.24, 2020

Page 8 of 14

**Appendix:**

Test Item	Test Method/ Instrument	MDL	Limit
<b>X-ray Fluorescence Spectrometry(XRF)</b>			
Lead (Pb)	IEC 62321-3-1:2013 / XRF	200mg/kg	≤1000mg/kg
Cadmium (Cd)		50mg/kg	≤100mg/kg
Mercury (Hg)		200mg/kg	≤1000mg/kg
Total Chromium		200mg/kg	/
Total Bromine		200mg/kg	/
<b>Wet Chemistry Method</b>			
Lead (Pb)	IEC 62321-5:2013/ ICP-OES	10mg/kg	≤1000mg/kg
Cadmium (Cd)	IEC 62321-5:2013/ ICP-OES	10mg/kg	≤100mg/kg
Mercury (Hg)	IEC 62321-4: 2013+A1:2017/ ICP-OES	10mg/kg	≤1000mg/kg
Non-metal Hexavalent Chromium (Cr <sup>6+</sup> )	IEC 62321-7-2:2017/ UV-Vis	8mg/kg	≤1000mg/kg
Metal Hexavalent Chromium (Cr <sup>6+</sup> )	IEC 62321-7-1:2015/ UV-Vis	0.1µg/cm <sup>2</sup>	/
Polybrominated Biphenyls (PBBs) -Monobromobiphenyl (MonoBB) -Dibromobiphenyl (DiBB) -Tribromobiphenyl (TriBB) -Tetrabromobiphenyl (TetraBB) -Pentabromobiphenyl (PentaBB) -Hexabromobiphenyl (HexaBB) -Heptabromobiphenyl (HeptaBB) -Octabromobiphenyl (OctaBB) -Nonabromodiphenyl (NonaBB) -Decabromodiphenyl (DecaBB)	IEC 62321-6:2015/ GC-MS	Single 5mg/kg	Sum ≤1000mg/kg
Polybrominated Diphenylethers (PBDEs) -Monobromodiphenyl ether (MonoBDE) -Dibromodiphenyl ether (DiBDE) -Tribromodiphenyl ether (TriBDE) -Tetrabromodiphenyl ether (TetraBDE) -Pentabromodiphenyl ether (PentaBDE) -Hexabromodiphenyl ether (HexaBDE) -Heptabromodiphenyl ether (HeptaBDE) -Octabromodiphenyl ether (OctaBDE) -Nonabromodiphenyl ether (NonaBDE) -Decabromodiphenyl ether (DecaBDE)	IEC 62321-6:2015/ GC-MS	Single 5mg/kg	Sum ≤1000mg/kg
Di-iso-butyl phthalate (DIBP)	IEC 62321-8:2017/ GC-MS	50mg/kg	≤1000mg/kg
Dibutyl phthalate (DBP)		50mg/kg	≤1000mg/kg
Butylbenzyl phthalate (BBP)		50mg/kg	≤1000mg/kg
Di-(2-ethylhexyl) Phthalate (DEHP)		50mg/kg	≤1000mg/kg

**Note:**

“≤”= Less than or equal to

The results shown in this test report refer only to the sample(s) tested unless otherwise stated and the sample(s) are retained for 30 days only. The document is issued by AGC, this document cannot be reproduced except in full with our prior written permission. The more details and the authenticity of the report will be confirmed at <http://www.agc-cert.com>.





# Test Report

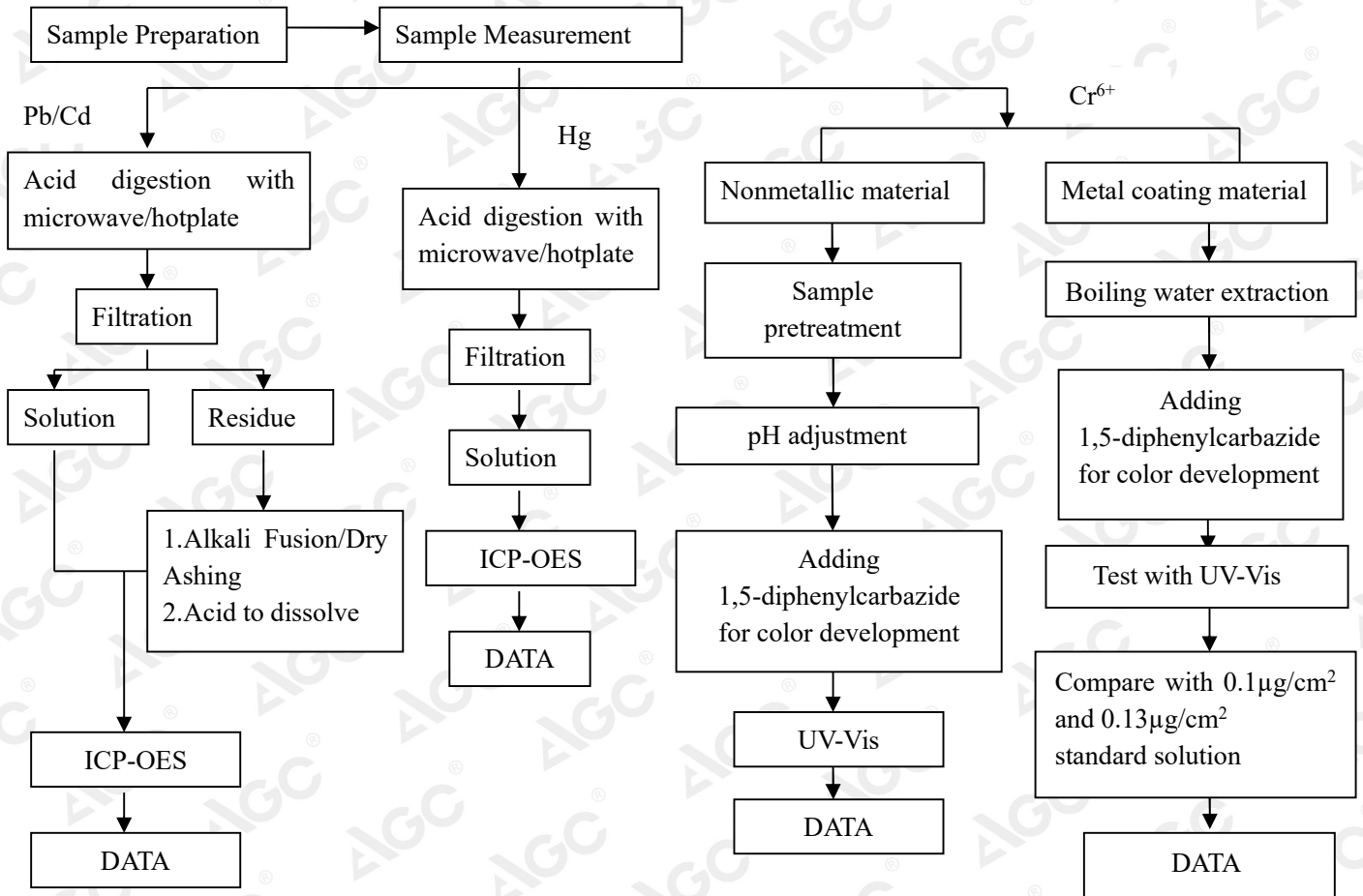
Report No.: AGC00552200704-001

Date: Jul.24, 2020

Page 9 of 14

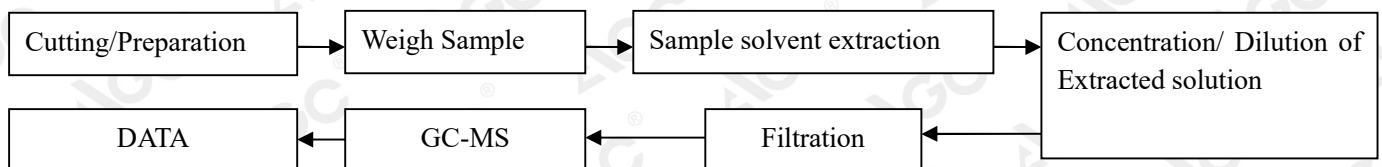
## Test Flow Chart

### 1. For Pb, Cd, Hg, Cr<sup>6+</sup>



These sample were dissolved totally by pre-conditioning method according to above flow chart (Cr<sup>6+</sup> test method excluded)

### 2. For PBBs, PBDEs, DBP, BBP, DEHP, DIBP



The results shown in this test report refer only to the sample(s) tested unless otherwise stated and the sample(s) are retained for 30 days only. The document is issued by AGC, this document cannot be reproduced except in full with our prior written permission. The more details and the authenticity of the report will be confirmed at <http://www.agc-cert.com>.

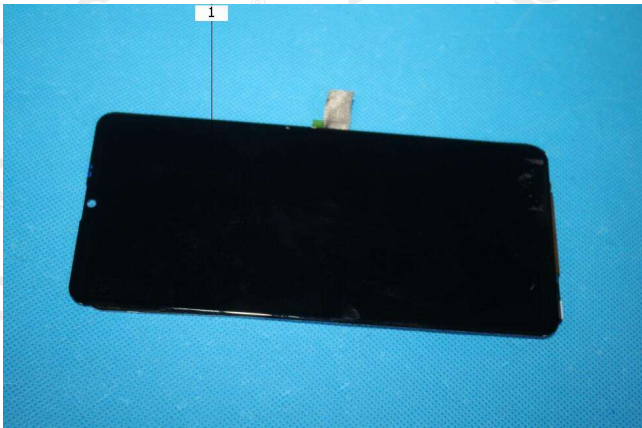
# Test Report

Report No.: AGC00552200704-001

Date: Jul.24, 2020

Page 10 of 14

## The photo of the sample



1



2



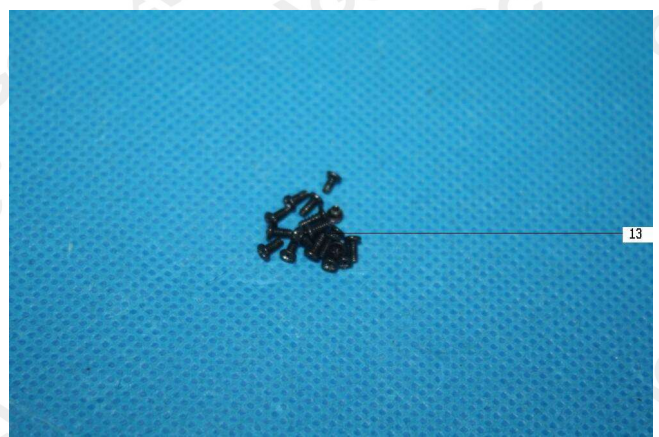
3



4



5



6

The results shown in this test report refer only to the sample(s) tested unless otherwise stated and the sample(s) are retained for 30 days only. The document is issued by AGC, this document cannot be reproduced except in full with our prior written permission. The more details and the authenticity of the report will be confirmed at <http://www.agc-cert.com>.

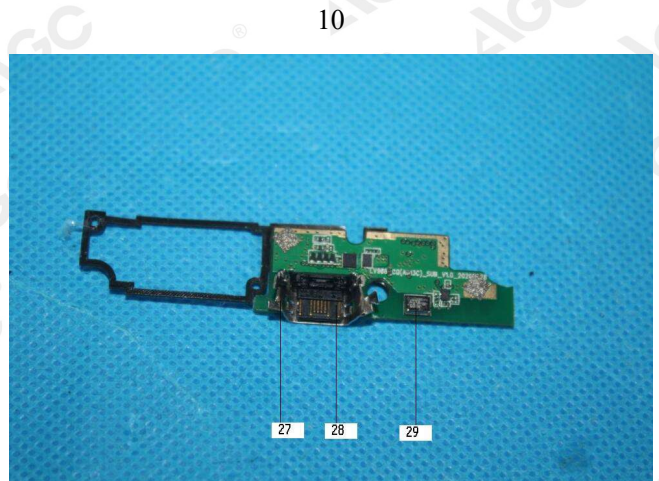
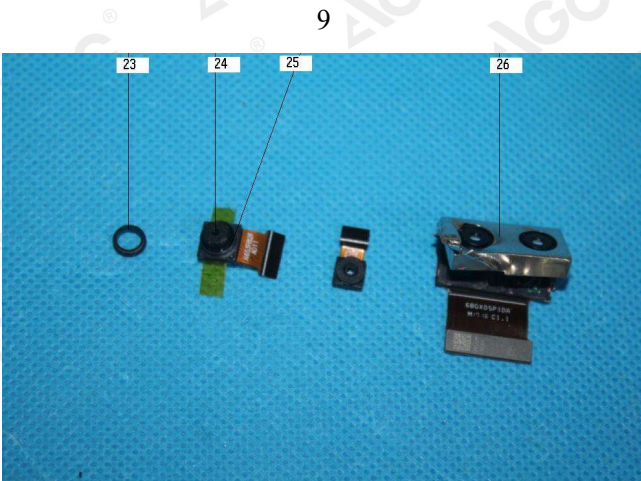
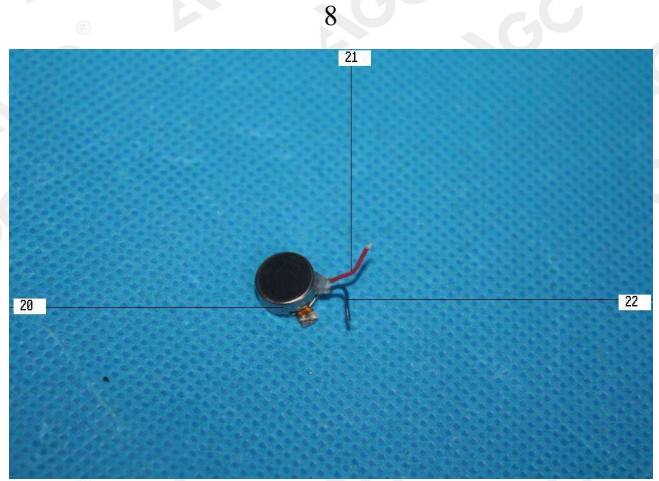
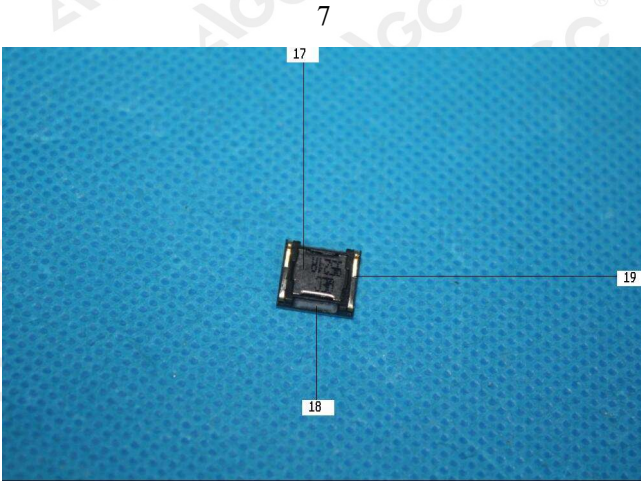
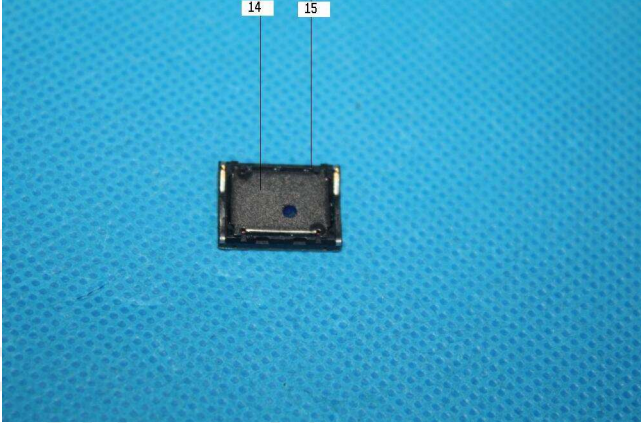


# Test Report

Report No.: AGC00552200704-001

Date: Jul.24, 2020

Page 11 of 14



The results shown in this test report refer only to the sample(s) tested unless otherwise stated and the sample(s) are retained for 30 days only. The document is issued by AGC, this document cannot be reproduced except in full with our prior written permission. The more details and the authenticity of the report will be confirmed at <http://www.agc-cert.com>.



Attestation of Global Compliance Std. & Tech.

Tel: +86-755 8358 3833 Fax: +86-755 2531 6612 E-mail: [agc01@agc-cert.com](mailto:agc01@agc-cert.com) 400 089 2118  
Add: Building 2, No.171, Meihua Road, Shangmeilin, Futian District, Shenzhen, Guangdong China

## No.18 C

# Test Report

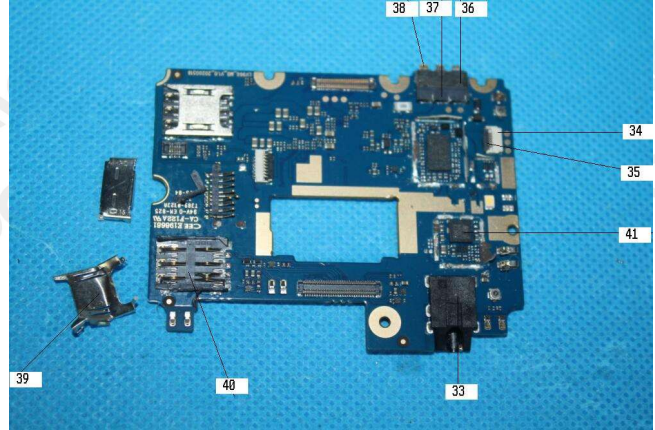
Report No.: AGC00552200704-001

Date: Jul.24, 2020

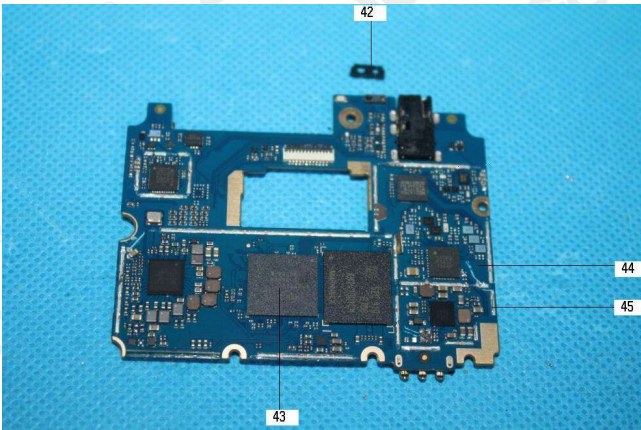
Page 12 of 14



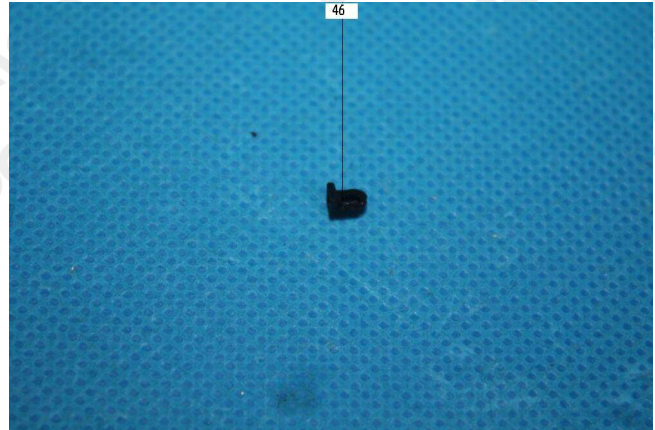
13



14



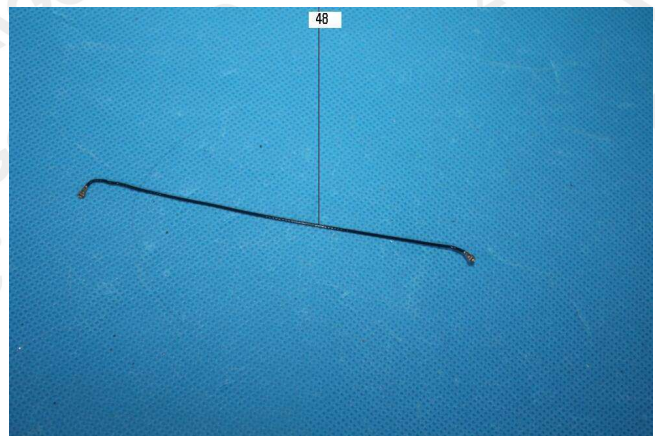
15



16



17



18

The results shown in this test report refer only to the sample(s) tested unless otherwise stated and the sample(s) are retained for 30 days only. The document is issued by AGC, this document cannot be reproduced except in full with our prior written permission. The more details and the authenticity of the report will be confirmed at <http://www.agc-cert.com>.



Attestation of Global Compliance Std. & Tech.

Tel: +86-755 8358 3833 Fax: +86-755 2531 6612 E-mail: agc01@agc-cert.com 400 089 2118  
Add: Building 2, No.171, Meihua Road, Shangmeilin, Futian District, Shenzhen, Guangdong China

**No.18 C**

# Test Report

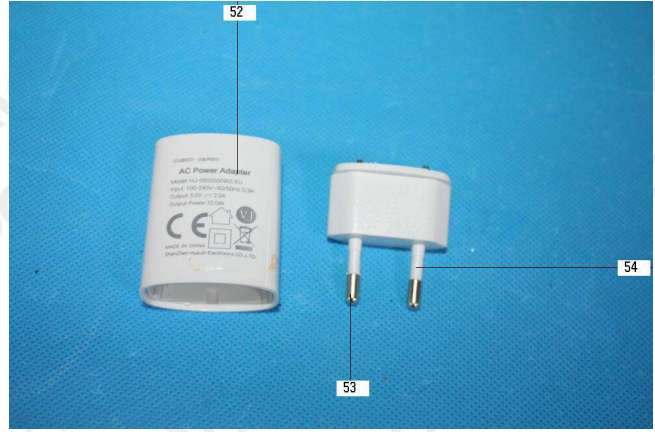
Report No.: AGC00552200704-001

Date: Jul.24, 2020

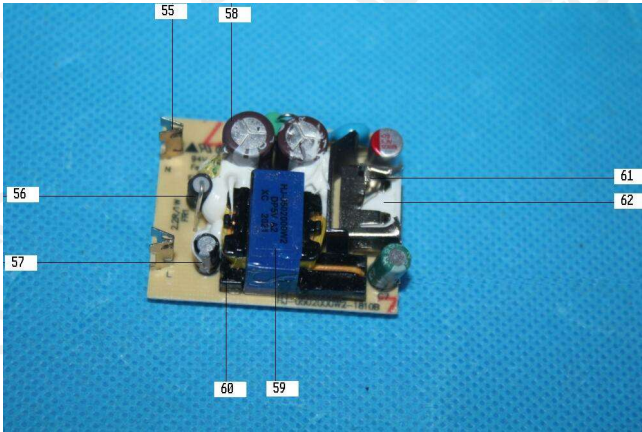
Page 13 of 14



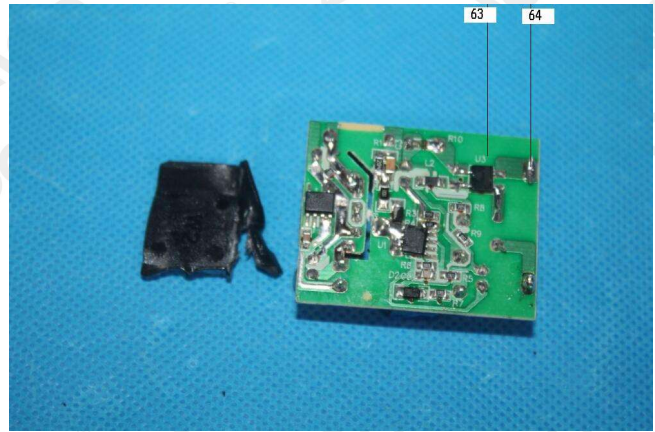
19



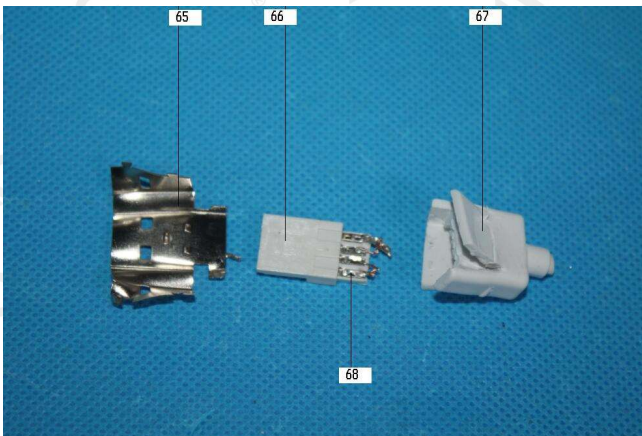
20



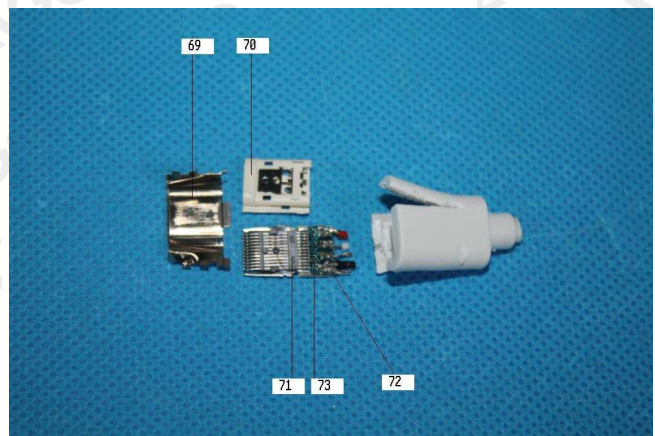
21



22



23



24

The results shown in this test report refer only to the sample(s) tested unless otherwise stated and the sample(s) are retained for 30 days only. The document is issued by AGC, this document cannot be reproduced except in full with our prior written permission. The more details and the authenticity of the report will be confirmed at <http://www.agc-cert.com>.

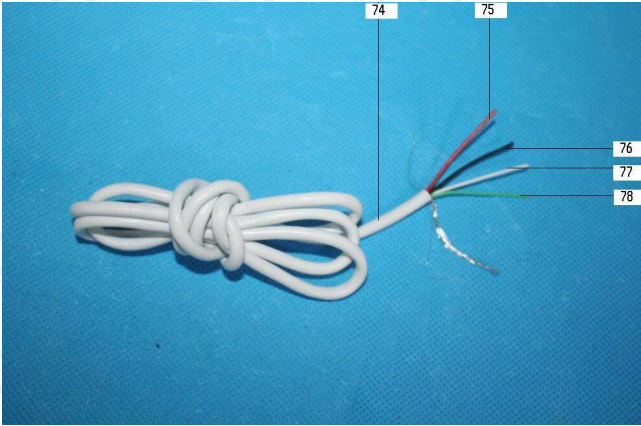


# Test Report

Report No.: AGC00552200704-001

Date: Jul.24, 2020

Page 14 of 14



25



**AGC00552200704-001**

AGC authenticate the photo only on original report

\*\*\* End of Report \*\*\*

The results shown in this test report refer only to the sample(s) tested unless otherwise stated and the sample(s) are retained for 30 days only. The document is issued by AGC, this document cannot be reproduced except in full with our prior written permission. The more details and the authenticity of the report will be confirmed at <http://www.agc-cert.com>.

